

Incremental encoders

Through hollow shaft $\varnothing 20$ to $\varnothing 38$ mm

250...2500 pulses per revolution

HOG 16



HOG 16

Technical data - electrical ratings

Voltage supply	9...30 VDC 5 VDC ± 5 % 9...26 VDC
Consumption w/o load	≤ 100 mA
Pulses per revolution	250...2500
Phase shift	$90^\circ \pm 20^\circ$
Scan ratio	40...60 %
Reference signal	Zero pulse, width 90°
Sensing method	Optical
Output frequency	≤ 120 kHz
Output signals	K1, K2, K0 + inverted
Output stages	HTL TTL/RS422
Interference immunity	EN 61000-6-2
Emitted interference	EN 61000-6-3
Approvals	CE, UL approval / E256710

Features

- Through hollow shaft $\varnothing 20$...38 mm
- Robust light-metal housing
- Output stage HTL or TTL
- Output stage TTL with regulator UB 9...26 VDC
- Special protection against corrosion
- Big terminal box, turn by 180°

Optional

- Redundant sensing with two terminal boxes
- With earthing brushes
- Hybrid bearing

Technical data - mechanical design

Size (flange)	$\varnothing 158$ mm
Shaft type	$\varnothing 20$...38 mm (through hollow shaft)
Shaft loading	≤ 450 N axial ≤ 600 N radial
Protection DIN EN 60529	IP 66
Operating speed	≤ 6000 rpm (mechanical)
Operating torque typ.	15 Ncm
Rotor moment of inertia	4.9 kgcm ² ($\varnothing 25$)
Materials	Housing: aluminium alloy Shaft: stainless steel
Operating temperature	-40 ... $+100$ °C
Resistance	IEC 60068-2-6 Vibration 20 g, 10-2000 Hz IEC 60068-2-27 Shock 300 g, 6 ms
Connection	Terminal box 2x terminal box (with option M)
Weight approx.	4.9 kg, 5.1 kg (with option M)

Incremental encoders

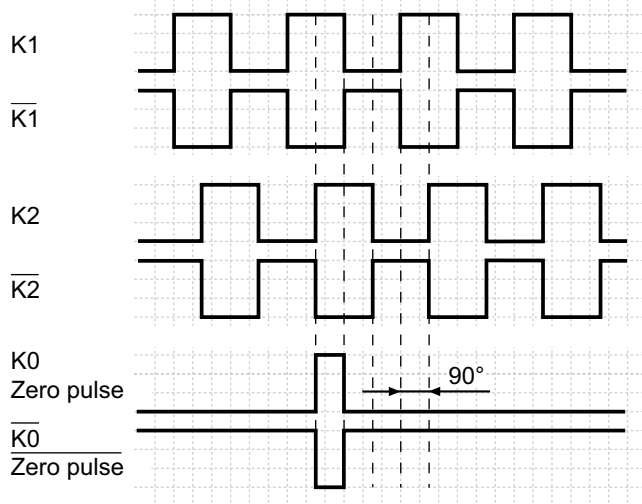
Through hollow shaft $\varnothing 20$ to $\varnothing 38$ mm

250...2500 pulses per revolution

HOG 16

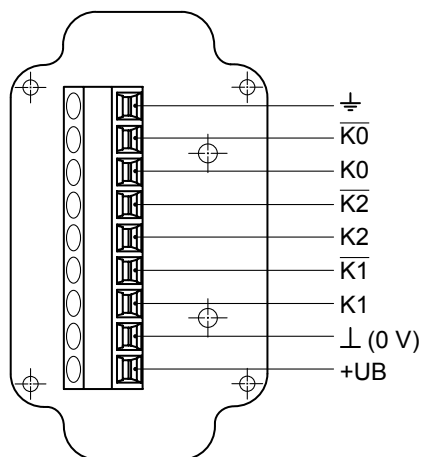
Output signals

At positive rotating direction



Terminal assignment

View A - Connecting terminal in terminal box



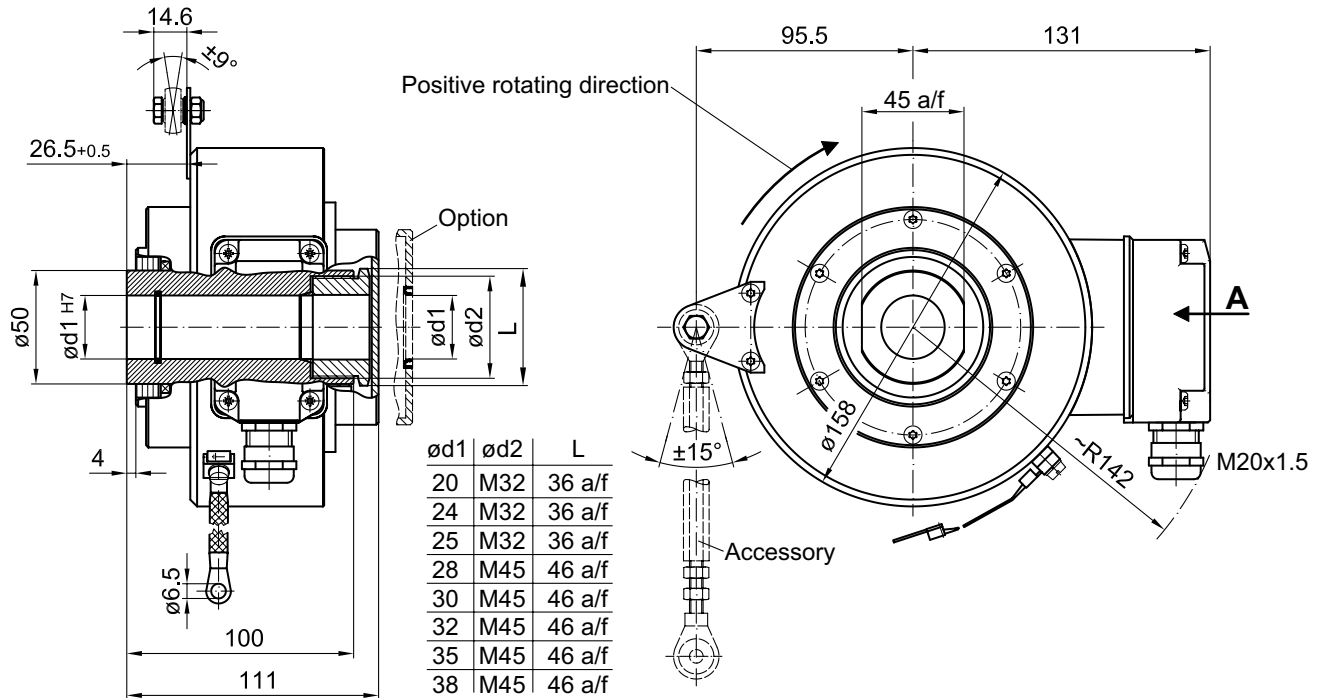
Incremental encoders

Through hollow shaft $\varnothing 20$ to $\varnothing 38$ mm
250...2500 pulses per revolution

HOG 16

Dimensions

HOG 16 - Version with single sensing



HOG 16 M - Version with redundant sensing

