



MDQ200



Single Phase Rectifier Bridge

VRRM 800 to 1800V

ID 200Amp

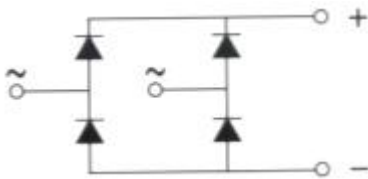
Applications

Single phase rectifiers for power supplies

Rectifiers for DC motor field supplies

Battery charger rectifiers

Input rectifiers for variable frequency drives



Features

Single phase bridge rectifier

Blocking voltage:800 to 1800V

Module Type

TYPE	VRRM	VRSM
MDQ200-08	800V	900V
MDQ200-12	1200V	1300V
MDQ200-16	1600V	1700V
MDQ200-18	1800V	1900V

Maximum Ratings

Symbol	Conditions	Values	Units
I_D	$T_c=85^{\circ}\text{C}$	200	A
IFSM	$T_{vj}=45^{\circ}\text{C}$ t=10ms (50HZ), sine	2000	A
i^2t	$T_{vj}=45^{\circ}\text{C}$ t=10ms (50HZ), sine	9000	A^2S
Viso	a.c.50HZ;r.m.s.;1min	2500	V
T_{vj}		-40 to 150	$^{\circ}\text{C}$
T_{stg}		-40 to 125	$^{\circ}\text{C}$
Weight	Module (Approximately)		g

Thermal Characteristics

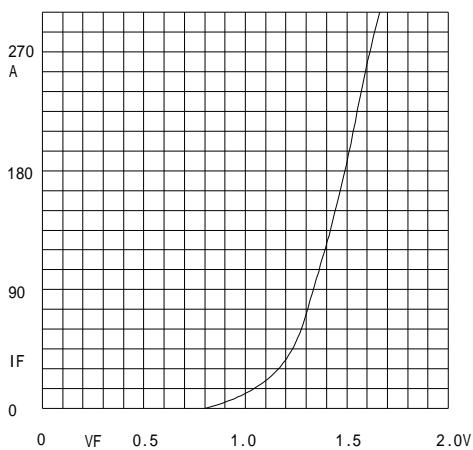
Symbol	Conditions	Values	Units
$R_{th(j-c)}$	Per module	0.14	$^{\circ}\text{C}/\text{W}$

Electrical Characteristics

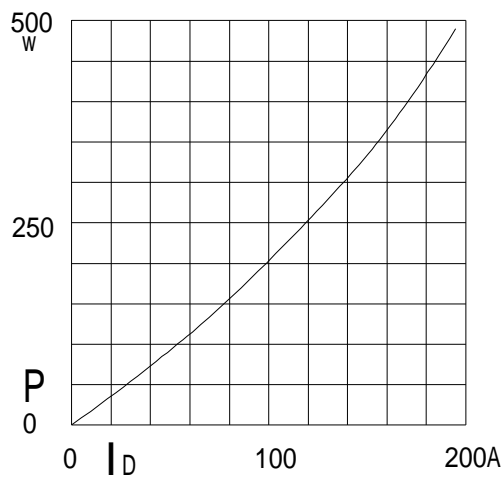
Symbol	Conditions	Values	Units
VFM	$T=25^{\circ}\text{C}$ IFM=200A	1.50	V
IRD	$T_{vj}=25^{\circ}\text{C}$ VRD=VRRM	≤ 0.5	mA
	$T_{vj}=150^{\circ}\text{C}$ VRD=VRRM	≤ 5	mA



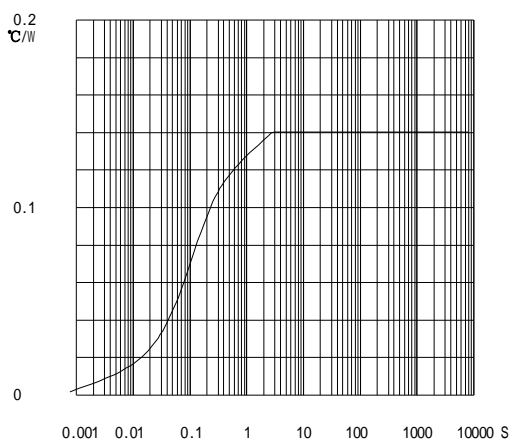
MDQ200



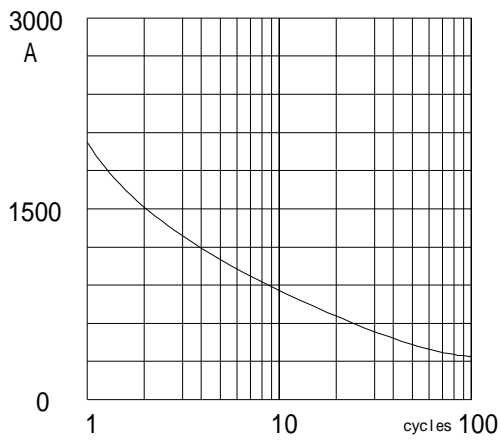
Forward Characteristics



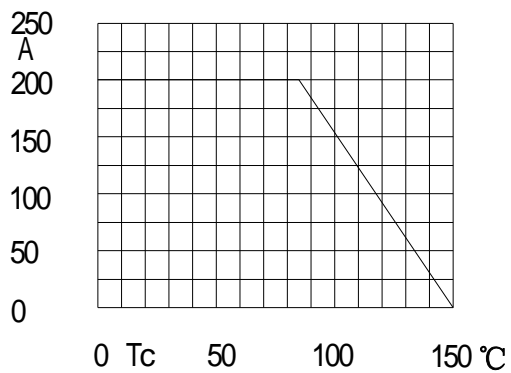
Power dissipation



Transient thermal impedance



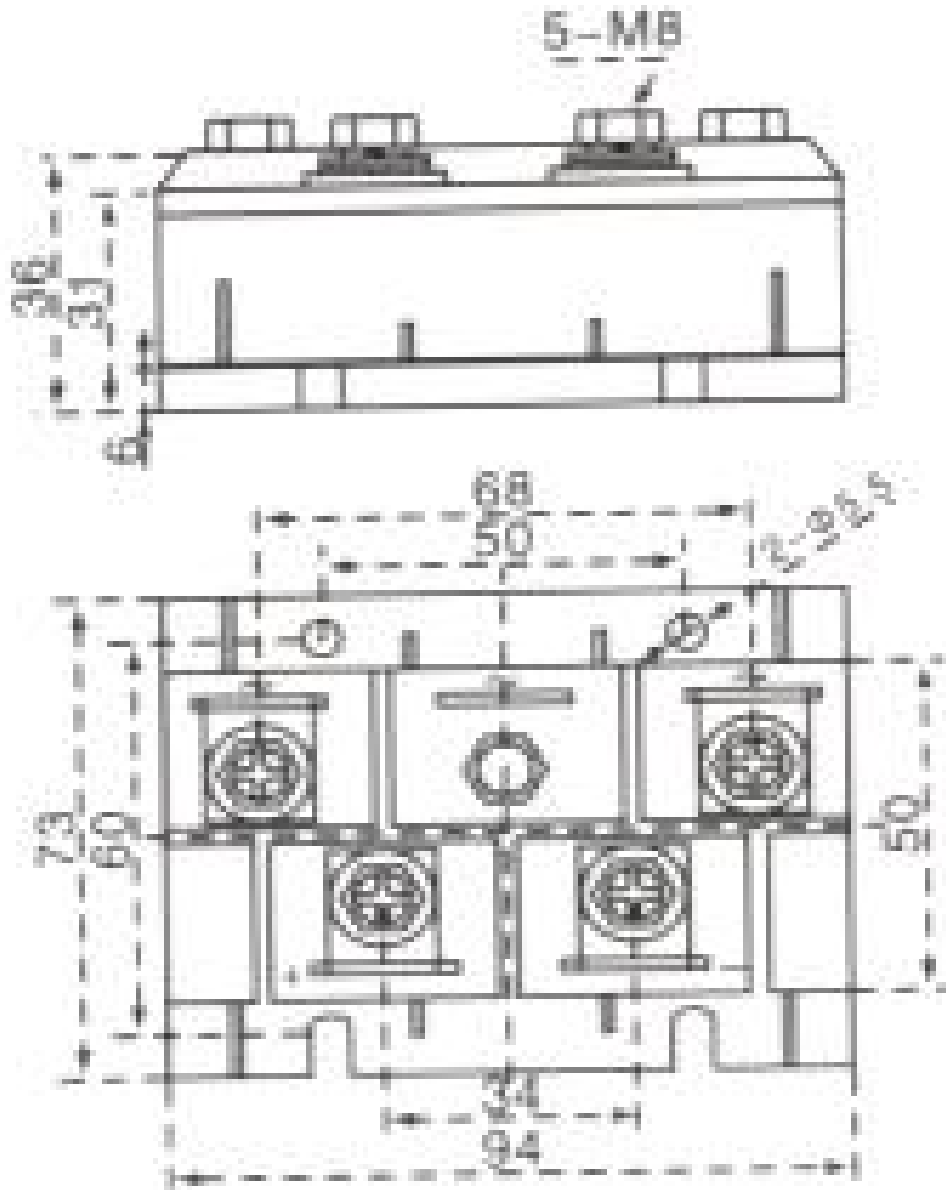
Max Non-Repetitive Forward Surge Current



Forward Current Derating Curve



MDQ200



Dimensions in mm